



**Tel Yehudah**

NATIONAL TEEN LEADERSHIP  
CAMP OF YOUNG JUDAEA

**CAMPER & PARENT GUIDE**  
**SUMMER 2016**

575 8th Avenue, 11th Floor • New York, New York 10018  
917-595-1900 • Fax: 866-950-2865

### Summer Office

(May 29 – August 23)

PO Box 69 • Barryville, New York 12719  
845-557-8311 • Fax: 866-950-2865

[info@teyehudah.org](mailto:info@teyehudah.org)  
[www.teyehudah.org](http://www.teyehudah.org)

*Camp Tel Yehudah is the national teen leadership camp of the Zionist youth movement, Young Judaea. We are a community dedicated to fun, friendships, learning and social action that draws campers and staff from all over the United States, United Kingdom, Israel and the world. Our dynamic program of experiential education, activism and leadership development, connects teens to Israel and Judaism. Located on 150 beautiful wooded acres on the banks of the Delaware River in Barryville, New York, we offer a diverse array of activities, such as athletics, music, arts and crafts, hiking, performing arts, out-of-camp trips and much more. We reach out to all Jewish youth - Orthodox, Conservative, Reform, Reconstructionist, secular and unaffiliated - to create a vibrant, unique, pluralistic community each summer.*

### FOLLOW US:



# WELCOME TO CAMP TEL YEHUDAH!

Dear 2016 Campers and Parents:

Shalom and welcome to Camp Tel Yehudah! The summer is just around the corner and the excitement is already building! We are just a few short months away from what is sure to be a fantastic summer.

As the National Teen Leadership Camp of Young Judea, we offer teenagers the opportunity to experience Jewish life, learning, culture and leadership development in a warm and meaningful community atmosphere. Through creative programs, extended out-of-camp trips, dynamic Israeli cultural activities, and an active outdoors and recreation program, each camper is instilled with a lasting connection to Israel and the Jewish people while having an amazing time.

In these pages you will find the Tel Yehudah Camper & Parent Information Guide for Summer 2016. PLEASE read through the guide CAREFULLY as it contains important and **NEW** information for this summer. PLEASE also complete all of the required forms listed in the Forms Guide and return them to us by May 16th. Please note: if your child/ren chooses to participate in certain elective programs offered by Camp Tel Yehudah, there may be additional forms to be completed and signed.

If you have any questions, please feel free to contact us at 800-970-CAMP (2267).

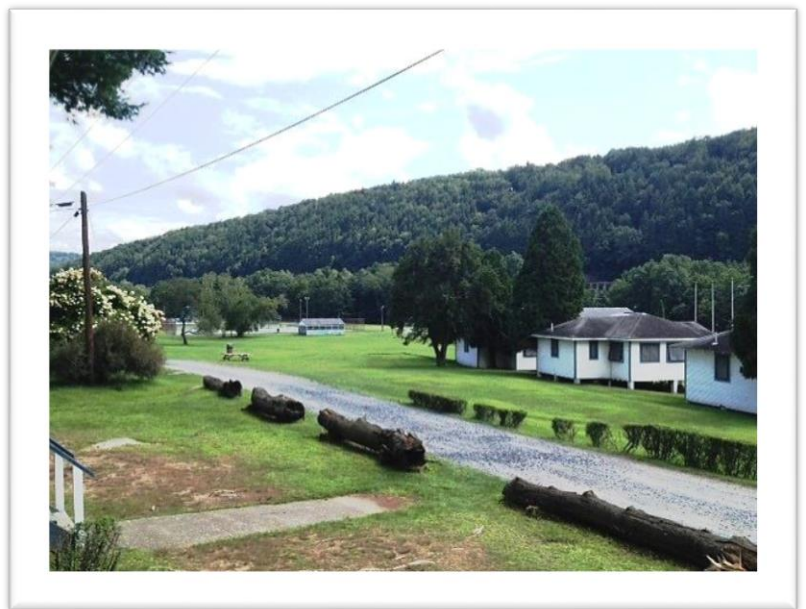
**All forms are due in the winter office no later than May 16, 2016. We cannot accept your child to camp without these forms filled out.** If you must wait to send in the medical form, we ask that you please send us all other forms in the meantime. Thank you very much.

We are looking forward to a great summer!

B'shalom,



David, on behalf of the Tel Yehudah Team



David Weinstein, Director  
Mac Lindner, Assistant Director  
Sharon Wahaba, Registrar  
Noah Wilker, Operations Director  
Andrew Rekhels, Havurah Program Manager

Mike Lasday, Board Chair

# Table of Contents

WELCOME TO CAMP TEL YEHUDAH!	3
Table of Contents	4
Dates and Programs	5
<i>Programs</i>	5
Travel Guidelines	6
<i>By Car</i>	6
<i>By Bus</i>	6
<i>By Plane</i>	6
Health Care and Safety	9
<i>General Medical Information</i>	9
<i>Vaccination Policy</i>	11
<i>Medication Procedures</i>	12
Stay In Touch	13
<i>MyTelYehudah</i>	14
Essential Information	15
Policies and Releases	18
<i>Parent/Camper Consent and Release</i>	18
<i>Rules of Good Conduct</i>	20
<i>Online Communications Policy for Tel Yehudah Campers</i>	21
Tel Yehudah Glossary	23
Support Tel Yehudah	24

# Dates and Programs

SESSION	START DATE	END DATE
First	Tuesday, June 21 <sup>st</sup>	Tuesday, July 19 <sup>th</sup>
Intercession	Tuesday, July 19 <sup>th</sup>	Monday, July 25 <sup>th</sup>
Second (including Havurah and Kimama NY)	Monday, July 25 <sup>th</sup>	Thursday, August 18 <sup>th</sup>

## PROGRAMS

CAMP GRADE	FIRST SESSION	SECOND SESSION	HAVURAH
9 <sup>th</sup>	Alumim	Kfir	Kfir
10 <sup>th</sup>	Yachad	Bonim	Bonim
11 <sup>th</sup> – 12 <sup>th</sup>	Hadracha	Hamamah	Hamamah

Please note that registration of your child is not complete until all fees have been paid in full and all necessary forms have been submitted. If registration is not completed by April 1st, your child may be moved to a waiting list jeopardizing his/her space.

All cancellations must be received by Camp Tel Yehudah in writing. A full refund of the deposit, less a \$100 processing fee for one-session campers or a \$200 processing fee for two-session campers, is available for cancellations received by Camp Tel Yehudah by March 1, 2016. All deposits will be forfeited after March 1, 2016. Fifty percent of the tuition paid will be refunded for registrations cancelled after May 1, 2016. No tuition refunds will be made for registrations cancelled after June 1, 2016 for first session campers or July 1, 2016 for second session campers. Accordingly, no refunds will be given after the start of the camp session. Camp activities, fees and itineraries are subject to change and Camp Tel Yehudah reserves the right, in its sole discretion, to cancel any session, program or activity due to low enrollment or otherwise.

**NOTE:** Tuition and fees are subject to change.

All forms will be available online and are due by May 16, 2016. Forms can be accessed and printed online by logging into your MyTelYehudah account at <https://telyehudah.campintouch.com/v2/login.aspx> and visiting the Forms and Documents section of your online account. **No child will be permitted to attend camp unless all completed forms have been received.**

# Travel Guidelines

## BY CAR

---

**ARRIVAL:** Campers who are being driven to camp should arrive at Camp Tel Yehudah between **12pm and 3pm** on the first day of the session.

**DEPARTURE:** Parents/Guardians picking up campers should arrive at camp between **10am and 11am** on the last day of the session.

## BY BUS

---

**ARRIVAL:** Bus transportation will be available from Newark Liberty Airport on the first day of each session. The bus will depart from **Terminal A Door #8** on the arrivals level. Campers should be at this area by **1pm**. Please make sure to check-in with a staff member.

**DEPARTURE:** Bus transportation will be available to Newark Liberty Airport on the last day of each session. The buses will drop off the campers at the same location at Newark Airport where they were picked up at approximately 12:00 noon. **The bus will be at Terminal A Door #8 on the arrivals level. Please make sure to check-out with a staff member.**

**The cost of bus service is \$30 one-way/ \$60 round trip.** This fee is only for those campers who are taking the bus to or from Newark Liberty Airport and does not apply to those campers who are flying into Newark Airport.

Bus procedures are:

1. Check-in will begin 30 minutes prior to departure.
2. A staff member will stand at the entrance of each bus and check campers in as they board the bus. For safety reasons, no parents are allowed on the bus. Campers will not be allowed to get off the bus once they are on it.
3. Roll call will be taken on each bus to ensure that everyone is present and smiling.

## BY PLANE

---

Parents/Campers are responsible for making their own plane reservations.

Once the reservation is made, it is the responsibility of the parents/guardian to notify the camp office of the camper's travel plans by filling out the Travel Form online at <https://telyehudah.campintouch.com/v2/login.aspx>. Any changes in travel should be handled directly with the Camp Office. (Please note, we advise you to purchase accident, baggage and trip cancellation insurance.)

Please remember to bring the appropriate identification for your child. Please consult your airline for the different types of permissible identification.

**ARRIVAL:** All flights, including those from the West Coast and international, must be scheduled to **arrive into Newark Liberty Airport between 12 pm and 3 pm** on the first day of the session. Parents of West Coast and International campers, please contact the office to discuss alternative arrival options if necessary.

### **WHAT HAPPENS ONCE CAMPERS' FLIGHTS ARRIVE AT NEWARK LIBERTY AIRPORT?**

- 1) Campers should proceed to the Baggage Claim Area. On their way they, will pass through security where a Tel Yehudah staff member, wearing a Tel Yehudah t-shirt, will be waiting.
- 2) Campers will check-in with this staff member and then proceed down to Baggage Claim. The staff member will put a "Welcome to TY" sticker on each camper to indicate that he/she has initially checked-in with a Tel Yehudah staff member.
- 3) Once at Baggage Claim, campers will be greeted by another Tel Yehudah staff member who will instruct them to gather their luggage and return, with their luggage, to the staff member's location. (\*While we will do our best to help campers with their luggage, gathering and carrying luggage is the responsibility of each camper. Please keep this in mind when packing your child for camp.)
- 4) Campers who arrive into Terminal B or C will be taken to the AirTrain by a staff member who will put them on the Tram taking them to Terminal A.
- 5) Once the AirTrain arrives at Terminal A they will be met by a staff member who will take them to the Tel Yehudah central check-in area. Campers will then check-in again with our Airport Captain.
- 6) The Airport Captain will give each camper a colored bracelet indicating the time his/her bus to camp is leaving the Airport. In addition each camper's name will be added to the corresponding bus's departure list.
- 7) When the time corresponds with that written on campers' colored bracelet, they will be instructed to gather their belongings, including their luggage, and proceed to the bus departure area.
- 8) As campers board the bus their names will be cross-checked with the individual bus's departure list to ensure that each camper signed up for the bus has boarded. The bus will not leave until every camper that is supposed to be on the bus is present.
- 9) Once everyone has checked in, the bus will depart for Camp Tel Yehudah.

Please note: due to the long hours of traveling to Tel Yehudah, we recommend that all campers who are traveling by bus or plane come with their own prepared snacks. There will be food provided at camp once the campers arrive.

**DEPARTURE:** All flights must be scheduled to depart from Newark Liberty Airport between **2 pm and 5 pm** on the last day of the session. **No camper should depart before 2 pm.** Buses will take campers from Camp Tel Yehudah to Newark Liberty Airport.

Our staff will assist campers with check-in of luggage and will assist them in getting to their departure gates (as much as Airport Security will permit.) As some flights leave later than others, staff will wait at the airport until all flights have departed.

In case of an emergency, make sure that your child has the following camp telephone number and instruct him/her to call camp at 845-557-8311.

It is highly recommended that each camper be given an additional \$25 to be turned into the Camp Office so he/she has money for the return trip home. This money will be returned to the camper before departing camp on the last day of the session.

**UNACCOMPANIED MINOR FEES:** Please notify Camp Tel Yehudah if your child will be traveling as an officially designated "unaccompanied minor" with your airline. We will provide you with the identifying information of the person who will be greeting your child at the gate. This information will be required by the airline. **It is the responsibility of the parent to arrange payment of the "unaccompanied minor" fee directly with the airline for both arrival and departure.**

**BAGGAGE:** clearly mark each bag on the outside and inside, with the camper's name and home address. In order to be courteous to other campers in the bunk, whether you plan on driving your child to camp or if

he/she is flying, each camper's belongings should fit into two pieces of luggage. Please note that campers are not allowed to bring trunks to camp.

Please **check with your airline in advance about additional checked baggage fees** and make arrangements to pay these fees in advance. Tel Yehudah is not responsible for such fees.

**SHIPPING LUGGAGE:** You may also ship the bags to and from camp via UPS or another carrier. Parents are responsible for the cost of shipping camper's luggage either to or from camp. Camp Tel Yehudah is not responsible for any lost or damaged luggage. Shipments should be addressed differently depending on your shipment method – visit the "Stay in Touch" page for proper address instructions.

**If you would like to ship your camper's luggage TO camp at the start of the session, please:**

1. Contact the shipping carrier of your choice to arrange the shipment, allowing enough time for the luggage to travel to camp and arrive before the start of the session:
  - a. If arriving for First Session, luggage should be delivered to camp no later than June 17<sup>th</sup>.
  - b. If arriving for Second Session, luggage should be delivered to camp no later than July 22<sup>nd</sup>.
2. After shipment has been arranged, you **must send a confirmation e-mail with shipping details** to: [telyehudah@youngjudaea.org](mailto:telyehudah@youngjudaea.org).
3. Shipped bags will be delivered to the camper's bunk on the first day of the session.

**If you would like to ship your camper's luggage FROM camp at the end of the session, please:**

1. Contact the shipping carrier of your choice to arrange for your camper's luggage to be picked up at the conclusion of the session:
  - a. If departing after First Session, luggage should be picked up from camp on July 19<sup>th</sup>.
  - b. If departing after Second Session, luggage should be picked up from camp on August 18<sup>th</sup>.
2. It is required that all shipping costs for luggage be **pre-paid directly to the shipping carrier**.
3. After payment for the shipment is complete, you must **send a confirmation of the payment along with shipping details** to: [telyehudah@youngjudaea.org](mailto:telyehudah@youngjudaea.org). Tel Yehudah must receive the confirmation e-mail no less than **one week prior** to the date of pickup.
4. Parents/Guardians must request from shipping carrier for the **pickup driver to arrive with the pre-paid shipping label** to affix to the luggage. Luggage cannot be shipped without this official label directly from your carrier.

**FINANCIAL ASSISTANCE FOR TRAVEL:** Tel Yehudah offers limited needs-based assistance\* to families to help alleviate the costs of tuition and travel to/from camp. Any family seeking assistance for travel costs must complete the Young Judaea Tuition Assistance application. More information about tuition assistance maybe be found at: <http://www.telyehudah.org/about/tuition-assistance/>

For those families needing financial assistance for travel, Tel Yehudah may be able to reimburse for the cost of the airfare over and above the first \$100, up to the maximum reimbursement amount which is based on average ticket prices from the departure city. The form to request financial assistance for travel and information about maximum reimbursement amounts will be available in the Forms and Documents section of your MyTelYehudah account at: <https://telyehudah.campintouch.com/v2/login.aspx>.

*\*Travel assistance will only apply to out-of-pocket fees. Funds cannot be considered for tickets purchased with frequent flyer miles/points. Ground travel, buses, car services or taxis to/from the airport will not be considered eligible for financial assistance for travel. Tel Yehudah can only consider travel to/from your home and Camp Tel Yehudah within reasonable dates of the camp session(s) for financial assistance eligibility.*

You can help ensure that Tel Yehudah remains a national and international camp. [Click here](http://www.telyehudah.org/give/) to contribute to our Travel Assistance Fund at: <http://www.telyehudah.org/give/>



# Health Care and Safety

## GENERAL MEDICAL INFORMATION

**DENTAL/ORTHODONTIC/OPTICAL:** A dental examination is advised prior to camp attendance. Please note provisions for orthodontic appliance care, if needed. It is recommended that children who wear glasses or contact lenses should bring an extra pair to camp, in case of breakage or loss. Please attach lens prescription information to the health forms. Contact lens wearers should bring sufficient lens care supplies to last for the summer. Charges for repairs to glasses or dental work will be billed directly to the parent/guardian.

**DIETARY ISSUES:** Please indicate on the online health history form any dietary allergies or concerns. Please contact our office before the summer to discuss any severe allergies. Tel Yehudah is not a nut free camp.

**LICE:** Before any camper is allowed to enter their bunk at the beginning of the session, they must first have their head checked for lice. Due to the alarming amount of Lice epidemics in the schools, we will be bringing in a professional team to check every child's head, in order to ensure a healthy and easy start of the summer. **Should your child be found to have lice you will have two options: you can either take your child home to treat him/her until all lice and nits are gone or you can have the Lice team at camp treat your child for a beginning fee of \$225.00.** This treatment policy also applies to any camper that is found to have lice during the session. If a camper is taken home for a lice treatment, the Tel Yehudah Health Center professionals must examine the camper prior to rejoining camp activities.

**LYME DISEASE:** Camp Tel Yehudah is located in an area of the country that has a dense population of ticks, including the deer tick. It is the deer tick that is responsible for the transmission of Lyme disease. These ticks are often found in woody and overgrown brush areas. While we take special care to limit the potential of attracting deer ticks we cannot guarantee they will not be in our area.

Parents and campers can take preventive measures to lower the possibility of exposure to infected ticks. According to the Center for Disease Control, these include wearing light colored clothing so ticks may be seen more easily, tucking pants into socks or shoes and applying an insect repellent containing DEET to both clothes and exposed skin. Daily tick checks by the camper are also recommended. The camper can do these at night while the camper is getting ready for bed. If a tick is noticed and removed within a 24-36 hour period the likelihood of getting Lyme disease is significantly decreased. **The Health Center is knowledgeable in matters related to ticks, including proper tick removal and post exposure treatment.** For more information on Lyme disease please consult the following link from the Center for Disease Control <http://www.cdc.gov/ncidod/dvbid/lyme>

**MEDIC-ALERT BRACELET:** Children who react to specific antibiotics or medications, or who have specific medical ailments, should wear a Medic-Alert bracelet, which can be obtained through the Medic-Alert Foundation in your city.

**MEDICAL EXAMINATION:** Your child's health and safety are our number one priority and, therefore, it is essential that you provide us with all the information requested on our medical forms. All information is confidential and is only shared with those staff members and health care professionals who we believe have a need to know about any condition your child may have and other persons only as required by the law.

We want to treat your child(ren) properly and fairly and the only way to do that is with FULL knowledge of your child's medical and/or mental condition.

**MEDICAL FORMS:** The Health, History and Examination Forms (accessed through your MyTelYehudah account) must be completed by you and your health care provider and received by camp no later than May

**16, 2016. No camper will be permitted into camp without completed and signed Medical Forms on file in our Health Center.**

There are two parts to the medical forms for Tel Yehudah:

- Part I is the Health History Form which is to be completed online. It can be found in the Forms and Documents section after logging into your online account and is to be filled out by parents or guardians ONLY.
- Part II includes two forms which can be downloaded from the Forms and Documents section and scanned and uploaded OR faxed back to us. We require original signatures on both of these forms:
  1. The Physicians Examination Form is to be filled out by licensed medical personnel ONLY.
  2. The Parent Authorization Form is to be completed by a parent or guardian.

The New York State Board of Health and the American Camp Association require that this form be on file prior to the start of camp. Be sure to include the required signatures of camper, parent/guardian and physician. Any medications and treatments needed during camp must be noted on this form. We are required by law to follow the New York State Board of Health regulations which state that no child will be permitted to enter camp without this completed form.

**Camp Tel Yehudah requires every camper to have an annual physical prior to May 16, 2016. This physical must take place within one calendar year prior to May 16, 2016; however, all information must be complete, true and accurate.**

**MEDICAL SERVICES AND COSTS:** Our modern Health Center (Mirpa'ah) is staffed 24 hours/day by licensed Nurses (RNs). A local physician is also available to see campers as needed. Most routine medical treatments are provided at camp without charge. Some illnesses and injuries are referred to a nearby hospital or the local physician. To facilitate payment for these services, campers are required to provide insurance information. A copy of both sides of your current insurance card must be on file in the Health Center.

**MEDICATION HOLIDAY:** Children may take certain medications (like Ritalin, Dexedrine, etc.) during the year which some physicians or psychiatrists may like to stop for a short period of time each year. The summer is a frequently chosen time because the child is not in school. Please be aware, however, that camp also requires a high degree of attention, concentration, and stability. We therefore **do not recommend any change in your child's medication during camp**. If your child takes any medication(s) during the year that he/she will not be taking during the summer, it is important that we know about such a "medication holiday."

**WILL I KNOW IF MY CHILD IS SICK?** There are three basic situations when the Health Center (Mirpa'ah) personnel will contact parents regarding their child/children's health:

1. If a camper must stay in the health center (mirpa'ah) overnight.
2. If a camper requires services or physicians outside of camp. We will have the camper call home before the visit, if practical.
3. If there is an emergency.

# VACCINATION POLICY

**BACKGROUND:** Each year, the American Academy of Pediatrics and the Canadian Pediatric Society publishes a “Recommended Childhood and Adolescent Immunization Schedule.” Practicing pediatricians across North America consider this the standard of care, and indeed the context in which they practice. In addition, the Centers for Disease Control (CDC) has established vaccine standards for adults.

With the clear public health based need to protect the camp community as a whole, **we require that all children, staff, visitors, and their families attending Camp Tel Yehudah must be immunized in the manner below.**

**CASE STATEMENT:** Parents send their children to camp and assume that their children will enjoy themselves, have positive social interactions and be safe and healthy. Safety and public health are priorities for Tel Yehudah. The vaccination of all members of the community is essential in order to maintain a safe environment and decrease the risk of transmission of preventable illnesses. The establishment of a safe environment must therefore include the requirement that all members of the Tel Yehudah community be adequately immunized against all of the preventable diseases as recommended by the American Academy of Pediatrics (AAP) and the Advisory Committee on Immunization Practices. While parents may choose to defer the vaccination of their children, for Tel Yehudah this is not an issue of individual rights and choice, but an issue of public health and policy. The routine vaccination of all children, staff and visitors is an important public health matter especially in the confined environment of a residential summer camp, with round-the-clock communal living and with some vulnerable populations present.

**POLICY STATEMENT:** All those who are in residence at camp (children and adults living in camp for longer than 7 days) are required to have age-appropriate vaccines recommended by the American Academy of Pediatrics (AAP), Canadian Pediatric Society, and Center for Disease Control (CDC), with the exceptions noted.

- DTaP, DT, Td, or Tdap (Diphtheria, Tetanus and Pertussis)
- Tdap vaccine is now required for children over age 11
- IPV (Poliovirus)
- HIB (Haemophilus influenza type b bacteria)
- PCV 13 (Pneumococcal) vaccine
- Rotavirus vaccine
- Hepatitis B
- Hepatitis A- strongly recommended
- MMR (Measles, Mumps, Rubella) or serologic evidence of immunity.  
*Adults born before 1957 are assumed to be immune to measles.*
- Varicella vaccine (Varivax – for Chicken Pox), or serologic or historical evidence of immunity
- Menactra (Meningococcal disease / Meningitis) - required for those age 11 and older (See below)

## IMPORTANT FOR SUMMER 2016

Our camps strongly recommend the administration of the **Hepatitis A vaccine** according to the standard AAP/CDC vaccine schedule. Please consult with your doctor about the recommended AAP/CDC schedule for the Hepatitis A vaccine.

Due to recent outbreaks of Pertussis and to the possibility that immunity may deteriorate over time, we are strongly recommending the **Tdap booster** for those 7 and over who need a Tetanus containing booster and who have not already had one Tdap.

We have seen a large number of flu cases this season, largely due to Influenza Flu A Virus. As we do not know the probability of the flu extending into the summer months, as has happened in some past years, we **strongly recommend** that all campers and staff receive **flu vaccine** as soon as possible.

## Tel Yehudah makes the following exceptions:

- **Gardasil or Cervarix (HPV vaccine):** though recommended by the AAP and CDC, it is a relatively new vaccine for both young women and young men, and we are not in a position to mandate its use.
- **Menactra:** In Canada, the National Advisory Committee on Immunization has not yet endorsed general use of Menactra; therefore, Menactra is not covered by the provincial health plans. Accordingly, while

campers, faculty, and staff attending Tel Yehudah are **STRONGLY ADVISED** to receive Menactra, at this time they will not be mandated to receive it. For more information about Meningococcal disease visit: [https://www.health.ny.gov/diseases/communicable/meningococcal/fact\\_sheet.htm](https://www.health.ny.gov/diseases/communicable/meningococcal/fact_sheet.htm)

### **Policy Exceptions:**

We recognize that individuals, who have had a documented allergy or severe adverse reaction to a particular vaccine, will not be able to receive further doses of that individual vaccine. In addition, individuals with medical conditions such as congenital immunodeficiency or HIV, malignancies receiving chemotherapy, transplant patients, and persons receiving immunosuppressive drugs and chronic steroids, will not be able to receive certain vaccines. **In these instances, a physician documenting the problem and exempting the child from further doses of that specific vaccine must be furnished to Tel Yehudah.** In addition, if an individual or his/her family believes that a specific situation poses extenuating circumstances, and furnishes a letter from a medical doctor (MD) substantiating this contention, Tel Yehudah will review such situations on a case by case basis.

## **MEDICATION PROCEDURES**

---

**New York State Law prohibits campers from keeping any medication (including over-the-counter items such as vitamins, aspirin, analgesic and antihistamine) in the bunk area.** Campers may be dismissed from camp for keeping medications in the cabin. It is not necessary to send your child with these medicines, as the Health Center will provide these as needed.

All medications, including temporary remedies needed (and provided) at camp, will be administered by the Health Center staff. Medication is administered at all meals and bedtime. However, inhalers and Epi-Pens are required to be carried by the camper at all times, with a back-up to be kept in the Health Center.

**All medication administered on a regular basis at camp MUST be pre-packaged by [Campers Pharmacy \(www.camperspharmacy.com\)](http://www.camperspharmacy.com).** Camp Tel Yehudah's pre-packaged medication vendor. Camp will require all parents/guardians whose children take medication to register with **Campers Pharmacy**, a vendor that will dispense and package all of your child/ren's medication for the duration of the camp season.

Campers Pharmacy, a direct provider, in full compliance with State and Federal law, will dispense your child's medication in pill form on a daily or as needed basis. All the pills your child takes will be dispensed by Campers Pharmacy and packaged, sealed and sorted according to Day and Time of administration. Each package will be labeled with your child's name, medicine, dosage, date and time to be given. This includes prescription, non-prescription, and vitamins. This method of dispensing medication during summer camp will minimize potential medication errors insuring that every camper gets the correct medication and the correct dosage at the right time on the right day.

Please be aware that you are not required to have Campers Pharmacy fill prescriptions that are not in pill form such as liquids, inhalers, epi-pens etc. However, since such prescriptions are Pharmacy Direct, you may choose to have Campers Pharmacy dispense those, as well. All medication will be shipped to camp prior to your child's arrival. All unused medication will be sent home by the camp.

Prescription medication will be billed directly to your Insurance Company. **Camp parents will be responsible for a one time summer camp processing charge of \$9.95**, which includes the cost of packaging and shipping all of your child's medications including refills directly to camp. The cost of any medication not covered by Insurance as well as any co-payments and deductibles will be billed to your credit cards as well as other requested over the counter items. Other requested over the counter items will also be charged to your account. Emergency orders are always accepted with an additional express overnight shipping charge where required.

**Any medications in pill form brought to camp that are not packaged through Campers Pharmacy will incur a \$100 processing fee unless camp was previously notified and permission granted.**

**Registration Deadline\*: May 9<sup>th</sup> for First Session and Full Summer; June 9<sup>th</sup> for Second Session** \*The one time summer camp processing charge is \$39.95 for all incomplete registrations and prescriptions received after the deadline dates.

Learn more and register for Campers Pharmacy at: [www.camperspharmacy.com](http://www.camperspharmacy.com). Feel free to contact Camp if you have any questions. When registering at Campers Pharmacy, please use Camp Code: **912719**.

# Stay In Touch

**SNAIL MAIL:** We encourage parents/guardians, friends and relatives to write. Campers enjoy receiving mail and packages while they are away from home. Mail that arrives at camp after August 17, 2016 will be returned to the sender.

**Mail sent via USPS should be addressed:**

Camper's Name, Bunk #  
Camp Tel Yehudah  
P.O. Box 69  
Barryville, NY 12719

**Packages sent via UPS, FedEx or Airborne Express should be addressed:**

Camper's Name, Bunk #  
Camp Tel Yehudah  
3149 State Route 97  
Barryville, NY 12719

## TELEPHONE:

The camp telephone number is 845-557-8311. **EMERGENCY LINE:** Press 9 after dialing the general camp phone number.

As campers are constantly in structured programs, and in order not to disrupt these programs, **campers are not permitted to receive or make phone calls while they are at camp.** Should you have a question about your child, please call the camp office. Campers may receive a telephone call on their birthday, which needs to be arranged with the camp office beforehand.

Camp Tel Yehudah is traditionally observant of Shabbat. Our office is closed from Friday evening through Sunday morning in honor of this tradition. An answering machine will be taking calls when the office is not open. In the event of an EMERGENCY when the office is closed, please call the Camp Tel Yehudah Emergency line.

## SUMMER OFFICE HOURS (EASTERN DAYLIGHT TIME):

Sunday – Thursday	9:00am to 7:00pm
Friday	9:00am to 4:00pm
Saturday	CLOSED

**COMMUNICATIONS FROM CAMP:** We will be regularly updating you about the amazing experiences your campers are having at Tel Yehudah over the course of the summer. Every Friday you will receive our weekly newsletter, BaMachane, which will include articles written by our campers and staff, important information and links to pictures and videos from the week. You can also follow us this summer and all year long on our [blog](#) and social media channels:



More information about communications from camp will be sent to you before the start of the summer.

# MYTEL YEHUDAH

---

Through our MyTelYehudah you can see what's going on at Tel Yehudah and keep in touch with your child. Just go to our website <http://www.telyehudah.org> and click on [SIGN IN](#). With MyTelYehudah, you will be able to view pictures, send emails through our online system and also access your account and update forms. You can also request to have your camper respond to your email, which will come in the form of a scanned fax to your e-mail inbox. Although we do not force your child to respond back, you will receive a response as soon as your child answers. Through our online system you can easily access and purchase summer camp stamps in order to e-mail your camper.

## How do I view pictures?

Simply sign in and click on the Photos button. Photos are kept in folders based on year, date and album. Click on any folder to see the pictures within that folder. There is no cost to view pictures and you can even purchase prints of your favorite pictures!

## How do I send an email to my camper & receive responses?

Click [SIGN IN](#) from our website <http://www.telyehudah.org> or go directly to <https://telyehudah.campintouch.com/v2/login.aspx>. Your camper(s) name should appear when you login. Click on "Email," type your message, and hit the "Send" button. If you would like an e-letter response from your camper, select the "I would like a handwritten reply to this email." check box as well. This will print your email, with a barcode page for your camper to write you a response. Please note that this system is optional, and does cost money. You will need to purchase Camp Stamps in order to send emails to your camper, as well as receive handwritten responses from your campers. Please explain this process to your camper before they leave for camp so they'll be sure to fill out the response letters during the summer. Please try not to send more than one letter a day. Your child will be having an amazing time at camp and might not have time to send back multiple letters at once. Another solution is to print e-letter responses in bulk before your child leaves for camp. You will only be charged when a letter is sent. **Please note that you will only be able to send emails in English.** Please contact us directly if you wish to send email in another language.

E-mails are printed every morning (except Shabbat) at 9:00 a.m. Any e-mails sent after 9:00 a.m. will be delivered to your camper the following day.

## What do I do if I lose my username and password?

You can get it online by clicking [SIGN IN](#) on our homepage and then clicking on the link "Retrieve Password?" You will receive an email with your username and password within a few minutes. Don't forget to check your SPAM/JUNK folder if your password is not e-mailed to you within a few minutes.

## Can other relatives use these services?

Certainly. Once you have set up your account, you will be able to invite other people to access these services. You can even share the camp stamps you purchase with your favorite relatives.

## Why do we use MyTelYehudah?

MyTelYehudah frees us up to do what we do best, take care of your kids! Each morning, the MyTelYehudah system bundles and sorts the messages for us to print and distribute to campers. It also protects us from computer viruses and allows us to easily manage these emails. Each summer we receive over 10,000 e-mails and upload thousands of pictures.

## What do I do if I have technical questions or problems with MyTelYehudah?

Please call CampMinder at 303-444-CAMP and ask about CampInTouch.



# Essential Information

**BIRTHDAYS:** Campers having birthdays while at camp will celebrate with their cabin (tsrif) group. In addition, campers may receive a telephone call on their birthday, which can be arranged with the camp office beforehand.

**BUNKING:** Please be aware that we may not be able to fulfill all requests, but **we will attempt to place each camper with one person he or she has requested.** We recommend that friends who want to be together should list each other as their preference. Bunks (tsrifim) will not be assigned until right before each session begins. Camp Tel Yehudah reserves the right to place campers in different groups / bunks than their choice at the discretion of the Camp Director. You can update your bunking preferences using the Bunk Request form found on the Forms and Documents Dashboard at: <https://telyehudah.campintouch.com/v2/login.aspx>. (Please note that in the case when a camper disrequests another camper, we attempt to honor that disrequest above any requests.)

**CAMPER BELONGINGS:** Camp Tel Yehudah reserves the right to search any camper's belongings, personal or private, when the health, well-being or safety of the campers requires doing so.

**CAMPER RELEASE:** Campers will only be released to a custodial parent or legal guardian. If someone other than the custodial parent or legal guardian will be picking up your child/ren, you must notify the office and submit written authorization. Unless otherwise instructed, **all cars must enter through the Aleph Gate (Northern Gate).**

**DIRECTIONS:** Tel Yehudah is located at 3149 Route 97 in Barryville, New York. Visit our website at: <http://www.telyehudah.org/contact/directions-to-tel-yehudah/> for directions to Tel Yehudah from various locations or to print out personalized directions.

**ELECTRONICS:** While we understand that technology plays an important role in the lives of our campers, we also strive to provide an experience at Tel Yehudah which nurtures real-time social connections amongst the members of our community. Deep and rich face-to-face conversations take place under apple trees or in bunks late at night. This freedom from following the news feeds, tweets and Instagram posts of hundreds of friends provides the opportunity to form meaningful and long-lasting friendships built on a set of common experiences in a shared community. (Of course when summer ends, these technologies will help keep our campers in touch until the next summer together.)

**In keeping with these goals, campers are not permitted to have any devices\* that can be cell or Wi-Fi enabled.** (This includes but is not limited to cell phones, iPhones, iPads, iPod Touches, Droids, laptops, Kindle Fires etc.) Any of these types of devices that are brought to camp will be turned into the office and placed in the safe at the beginning of camp, and any devices found throughout the session will also be collected. Campers who are participating in out-of-camp trips that take them to cities, may retrieve their cell phones from the office prior to those trips as they provide an additional way for staff to keep in touch with campers. Campers are permitted to bring MP3 players such as iPod shuffles and digital cameras that do not connect through Wi-Fi or cellular service.

*\*We will allow e-book readers that cannot also be used as Internet browsers or contain apps. (Books will need to be downloaded onto these devices prior to camp as Wi-Fi will not be available to campers.)*

**FOOD:** All food coming into camp must be kosher. In order to qualify as being kosher, there must be a kosher symbol on the package. The following are examples of such symbols:



**Absolutely no outside food is to be brought into the *chadar ochel* (dining hall) at any time.**

**FULL SUMMER CAMPERS:** Based on the needs of full summer campers, Tel Yehudah will offer special programming during our intersession. We will be in touch in the late winter to ascertain the need for such programming at camp. Campers who will be attending the full summer but wish to go home during intersession may leave some belongings at camp in a specially designated area. However, we strongly discourage campers leaving items of value.

**LAUNDRY:** Laundry will be sent out to a laundry service at least twice each session. Campers should bring sufficient clothing to cover a period of at least two weeks. Campers will be given a personal laundry bag to use during the session. The camper is responsible for returning that laundry bag after the last laundry of the session is returned. Campers will be charged a fee for missing or lost laundry bags. All articles of clothing must be clearly marked with the camper's FULL name. **Though we make a conscious effort to see that the campers do not lose clothing, Camp Tel Yehudah cannot assume responsibility for loss or damage of clothing.**

**LEAVING CAMP:** There are so many activities, celebrations and trips packed into a child's summer. We work incredibly hard to create a unique Jewish camping opportunity, full of meaningful experiences. Creating and being a part of a community are highly valued at camp. Therefore, temporarily withdrawing your child for an outside activity is incredibly disruptive to their experience and has a negative effect on the community. **If your camper will be leaving camp for any reason during the summer you, the parent/guardian, must submit a note in writing and obtain approval from the camp director before your camper will be allowed to leave camp.**

**MAKOLET (CANTEEN):** The tuition fee entitles each camper to a \$10 canteen account. Snacks, beverages and ice cream are available at the canteen which is open on most days during chofesh (free time) in the afternoon. Funds can be added to your child's canteen account by contacting our office. Camp Tel Yehudah will not reimburse anyone for unused canteen funds.

**MONEY:** Camp tuition covers almost all expenses. Therefore, we recommend that your child brings a limited amount of money to camp. A suggested amount would be \$30 to \$50 of spending money. This money might cover additional expenses during trips (i.e. snacks) or the purchase of TY concessions. Campers flying home from camp should bring an additional \$25 for pocket money on the return flight. All money should be placed in the camp safe upon arrival to camp. Campers will have the opportunity to take money out of the safe throughout the session. **Camp is not responsible for any money not secured in our safe.**

**NEW YORK STATE HEALTH LAWS FOR SUMMER CAMPS:** We invite you to visit the following website to learn about the standards we are required to meet as a summer camp in the State of New York. The website address is: <http://www.health.ny.gov/publications/3601.pdf> We are required by the New York State Department of Health to notify you (i) that the camp must have a permit to operate from the New York State Department of Health or the designated permit issuing official (ii) that the camp is required to be inspected twice a year and (iii) that inspection reports and required plans are filed with the local Health Department at 50 North St. Suite 2; Monticello, NY 12701 (845) 794-2045 (iv) If there is a serious injury, illness or abuse incident during the summer. Depending on the nature of the illness or incident, we may also be required to notify the local Health Department.

**OUT OF TOWN:** If you are planning to be away or at another address while your child is away at camp, please notify the office with instructions about how we may contact you. If you will be out of the country, please provide us with the name, address and phone number of the person who will be responsible for your child in case of an emergency.

**SHABBAT ATTIRE:** The Camp Tel Yehudah community honors and observes Shabbat. Therefore, we are requesting all campers bring appropriate clothing to contribute to our special Shabbat atmosphere.



**STAFF GRATUITIES:** The staff members of Tel Yehudah are positive role models for our campers who work hard and dedicate their summers to enriching their campers' lives. In accordance with the American Camp Association Guidelines of Professional Ethics, our staff is instructed not to accept gifts, monies or any other gratuities.

You can still certainly help say thank you to our amazing staff. Click [here](http://www.telyehudah.org/give/) to contribute to our Staff Activity and Development Fund at: <http://www.telyehudah.org/give/>

This fund helps support orientation and in-service training, day off transportation, fun evening activities, end of summer staff banquet and more. The staff members will be notified of your gift on their behalf.

**TUITION:** All camp fees are due in full by May 1, 2016. Your child will not be permitted to enter camp if the camp fees are not paid in full. Any camper with an outstanding tuition balance after May 1, 2016 will be placed on a waitlist.

**VALUABLES:** Camp Tel Yehudah is **NOT** responsible for any valuables brought to camp. This includes clothing, cameras, stereos, iPods, jewelry, etc. Staff will collect money and valuables to be placed in the camp safe for safe keeping. Campers will have the opportunity to take items out of the safe throughout the session, if needed. We strongly discourage campers from bringing any item of real or sentimental value to camp. Campers are in a group living situation and it is easy for items to become misplaced or accidentally damaged.

**VISITING:** In order to minimize disruption to the program of camp, there is no visiting during the session. Campers attending Camp Tel Yehudah for the whole summer may have visitors on the last day of the first session (Tuesday, July 19<sup>th</sup>.) During this visiting time you are more than welcome to tour camp with your child and visit with him/her either at or outside of camp. This is the only day set aside for visiting camp. If you drop your child off on the first day of the session, you are more than welcome to walk around the campgrounds at that time.

**WEAPONS:** For the safety of your child, weapons including, but not limited to, knives (including Swiss Army type knives), guns, or explosives (including firecrackers) are prohibited in camp and may not be carried on camp sponsored-trips or on camp property at any time. Any camper violating this policy may be subject to immediate dismissal from camp and sent home at the parent's expense.

**WATER BOTTLE:** Please pack two water bottles with your camper's name on it. In our efforts to reduce waste, keep camp clean and ensure that our campers are hydrated **we require all campers to carry a water bottle** with them this summer which they will use throughout the day in camp. We will no longer be providing disposable cups to our campers.

## ONLINE CAMP STORE

Shop today by visiting: <http://www.telyehudah.org/current-families/before-camp/> Before you begin the process of shopping, labeling and packing your child for an amazing summer at Tel Yehudah, we invite you to check out our online store in association with CampSpot. You will find **TY logo sweatshirts, shorts, laundry bags, shirts, hats, and much more.** In addition you can purchase most of the other items you will need to pack for camp. And to make it all very convenient, you will find the TY packing list right there on the website.

As you shop at CampSpot, please keep in mind that **you are directly supporting the Tel Yehudah Tuition Assistance Fund** and helping other campers attend TY this summer. **Twenty percent of everything you purchase with a TY logo will support TY, as well as ten percent of all non-logo purchases.**

# Policies and Releases

*We are extremely excited about the opportunity to host your teen at Tel Yehudah this summer. Our mission is to empower our campers to inspire change within their communities in the realms of Judaism, Zionism, pluralism and social action while having a memorable and fun experience. In order to accomplish this mission, we believe that it is vitally important that each and every camper and their parents or guardians understand what they can expect from a summer at Camp Tel Yehudah and what is expected of them. With that in mind, we would urge you to read the following pages carefully and to review them closely with your child.*

## PARENT/CAMPER CONSENT AND RELEASE

---

### Camp Activities

Camp Tel Yehudah offers a wide variety of exciting activities, including sports activities, swimming and aquatic activities, rock climbing and kayaking, both on-site and at facilities not owned or operated by the camp. A large part of the camping experience is the participation in activities, group living arrangements and other social interactions that may be new to your child. We believe that these activities are of tremendous value, but they also come with risks and uncertainties, which you and your child should be aware of, and assume, by participating in the camp. By signing below, you give your child permission to participate fully in all camp activities, and to ride in vehicles arranged for by the camp to off-site activities or in the case of an emergency.

While we want each camper to enjoy all camp activities to the fullest, we also want to make sure that we are fully informed of any physical limitation that your child may have. A typical day at camp will include many physically vigorous activities, and it is your responsibility to tell us of any physical limitations to be imposed upon your child. We will assume that your child is in sound physical, mental and emotional health and is fully able to participate in all camp activities without the need of individualized or special attention, accommodation or medical regimen, unless you communicate to us otherwise in a health history or physicians' examination form that we ask you to complete in order to provide that type of information. Thus, it is extremely important that you fill out these forms accurately and that you inform the doctor signing these forms of all camp activities as well as all relevant information regarding your child. In addition, please remember that you will be fully responsible for the prompt payment of any and all expenses for medical, vision and/or dental care provided to your child. Finally, please understand that we must reserve the right to determine, in our sole discretion, that a camper may not participate in particular camp activities and/or may be removed from the camp without a refund.

### Travel to and from Camp; Third Party Arrangements

You are responsible for making transportation arrangements to get your child to and from camp and assume all risks related to such travel. We urge you to purchase accident, baggage and trip cancellation insurance to cover your child's travel to and from camp and – if you believe that you already have such insurance – to review the terms to ensure that it will cover travel to and from camp. We may, from time to time, assist you in making arrangements with third parties relating to your child's travel to and from camp and/or other activities and services provided by third parties at camp. In all such circumstances, please understand that we are only acting as your agent in introducing you to the third party, and are not liable for any actions or inactions of the third party or any other issues you may have with them.

### Camp Policies

In order to provide a safe and comfortable environment for all, we have a number of policies, rules and regulations in place, including those contained in the 2016 Camper & Parent Guide and the Rules of Good Conduct. By signing below, you confirm that you have read and understood the 2016 Camper & Parent Guide and Rules of Good Conduct, have reviewed them with your child and that you and your child will be bound by these documents as well as all other camp policies, rules and regulations, whether written or unwritten, including any that might be put in place or changed after you sign this document. While we sincerely hope not to take any of these actions, we must reserve the right to enter and conduct searches of camper accommodations and/or property, to administer alcohol and drug test, and to take disciplinary action, in order

to enforce these policies, rules and regulations. Any such actions may be taken by our own personnel or by third parties acting on our behalf, and by signing the Signature Form, you consent to all such actions.

## Releases

While your child is attending camp, we will be taking photographs, videos, etc., some of which may include your child. In addition, while we have taken safety measures to minimize risks, there are inherent risks involved with camp activities. Given this, we need each parent and camper to agree to the releases below, and by signing this document you are agreeing to these releases on your own behalf and on behalf of your child:

*You and your child irrevocably grant to any and all of Camp Tel Yehudah, Young Judaea Global Inc., and each of their (individually or collectively) affiliates, related entities, officers, directors, employees, volunteers, members, donors, agents, and representatives and their successors and assigns (hereinafter referred to, individually and collectively as the "Young Judaea Entities") the right to photograph, film, videotape, audiotape and/or otherwise record, by any and all methods now or hereafter known, your and your child's image, voice and/or likeness and to use your and your child's name, voice, and any photograph, image, or likeness in which you or your child may appear or any utterance or statements you or your child may make, or any portion thereof, in any and all media including the Internet, any number of times, in any and all manners, and by any and all means now or hereafter known, for any advertising, trade, fundraising, promotional or other purposes, without approval or any compensation to your or your child unless prohibited by law. You and your child each agree that any photograph, image, likeness, utterance or statement shall be the Young Judaea Entities' sole and exclusive property. You and your child release the Young Judaea Entities from any liability in connection with the use of you or your child's name, voice and/or any photograph, image, likeness, utterance or statement.*

*In consideration of your child's acceptance to Camp Tel Yehudah and participation in camp activities, and by signing below, you and your child, for yourselves, individually and jointly, you and your child's next of kin, family members, heirs, representatives, agents, successors and assigns, hereby agree to: (i) release, waive and discharge the Young Judaea Entities from, and agree not to sue the Young Judaea Entities with respect, any and all Claims (as hereinafter defined); and (ii) indemnify, defend and hold harmless the Young Judaea Entities from any and all Claims and any and all liability, damage, cost, loss and expense (including attorneys' fees and expenses) arising from, related to, or in connection with: (A) your child's acts and omissions; and (B) any and all Claims made at any time, past, present or future, by you, your child or any family member or other person to whom you or your child are related by blood, law, adoption or marriage, or their heirs, representatives, agents, successors or assigns. This release shall be interpreted as broadly as possible in favor of the Young Judaea Entities.*

*The term "Claims" as used herein shall mean any and all claims and liability of any kind whatsoever, past, present and future, both known and unknown, including those which have not yet arisen or matured, whether in law or in equity, arising from, related to, or in connection with your child's attendance at Camp Tel Yehudah and/or participation in camp activities, your and your child's travel to, from, during, before and after camp, including at the Intersession and participation in Opening Day and Closing Day, any medication, medical advice, treatment or testing (including without limitation blood tests) your child may or may not receive, any entry into or search of your child's property or accommodations, any drug or alcohol testing, any discipline your child may receive, your child's departure, withdrawal, dismissal or other removal from Camp Tel Yehudah, any changes in or absence from the camp program, any communications or notices or lack thereof before, during or after camp, use of CampMinder's services or the services of any electronic communications distribution company working with Camp Tel Yehudah, any anti-discrimination laws and regulations of any jurisdiction, any delay, property damage, loss or theft, any hostile act, government act or omission, terrorism, social unrest, local laws, climatic conditions, breach of contract, accident, occurrence, business interruption, machinery breakdown, visa, passport, vaccination or other entry requirement, substitution or change of accommodations, transportation or other services, rates, bookings, reservations or connections, natural disaster, labor dispute, baggage and property handling, any other conditions, developments or disruptions, any physical, emotional or psychological injury, illness, disease, or death, third party claims and all other claims, liability, damage, cost, loss or expense of any nature whatsoever, including but not limited to, claims for negligence on the part of the Young Judaea Entities or any other person or entity.*

## Changes to Program

Due to special or unforeseen circumstances, we must reserve the right to substitute activities, accommodations and services and/or to adjust camp tuition or other fees. We also must reserve the right to cancel any session or program option, or change itineraries due to low enrollment, lack of availability, or other unforeseen circumstances.

## Disputes

In the event that there are any questions or potential issues of dispute regarding your child's attendance at camp we urge you to contact us directly so that we can make every effort to resolve it in a manner that is mutually satisfactory. To the extent that we are unable to resolve any dispute amicably, you agree that this document and any and all issues related to it and/or any other agreement related to your child's attendance at Camp Tel Yehudah and/or or participation in camp activities are to be solely and exclusively governed by, and construed in accordance with, the laws of the State of New York, without giving effect to principles of conflicts of law. The State or Federal courts located in the State of New York shall have exclusive jurisdiction to determine disputes arising from, related to, in connection with or in any way involving any of these matters, and you and your child each consent to the exercise by such courts of personal jurisdiction over them and waive and agree not to assert any objection or defense based on lack of personal or subject matter jurisdiction or venue, and waive your rights, if any, to institute or prosecute suit in any forum other than the State of New York. You agree to pay all reasonable attorneys' fees and all other costs and expenses which may be incurred by the Young Judaea Entities in the enforcement of or attempt to enforce this document, whether by action of law or otherwise. If any term or provision hereof, and/or any other agreement related to your child's attendance at Camp Tel Yehudah and/or or participation in camp activities is declared invalid by a court of competent jurisdiction, the remaining terms and provisions hereof or thereof shall remain unimpaired and in full force and effect.

# RULES OF GOOD CONDUCT

---

**In order to accomplish our mission, there are rules prohibiting malicious, destructive and inappropriate behavior by campers. Campers and their parent(s)/guardian(s) should be familiar with the following rules and restrictions before campers come to camp:**

1. In order to provide an atmosphere which is comfortable for everyone, Shabbat and Kashrut will be observed.
2. No one may leave the Camp grounds (as such grounds are defined by the TY director in his/her sole discretion) without specific permission of the TY director.
3. All campers must obey staff members at all times. All campers must respect each other and all other people they come into contact with during Camp and refrain from inappropriate behavior. **Bullying and other forms of harassment will not be tolerated and would be grounds for dismissal from camp.**
4. Tobacco, alcohol and illegal drugs of any kind have no place at Camp Tel Yehudah because they are destructive to the community and the individual. Therefore, any camper who uses, possesses or distributes tobacco (including e-cigarettes), alcohol or illegal drugs, as determined by Camp Tel Yehudah in its sole discretion, will be sent home immediately at the parent(s)/guardian(s) expense, and will be subject to such other consequences as determined by Young Judaea in accordance with its policies.
5. All campers must respect the property of each other and of Camp.
6. All campers will attend and participate in the entire Camp program, including all of its scheduled activities, unless otherwise informed by the staff, it being understood that physical sports are always optional.
7. Camp Tel Yehudah reserves the right to search the property and/or accommodations of any camper including accommodations not owned and/or operated by Camp Tel Yehudah, with or without the presence of the camper.
8. Campers are not permitted to possess knives or other weapons of any kind.
9. Campers are jointly responsible with their parent(s)/guardian(s) for any damage, including graffiti, to camp property; parent(s)/guardian(s) will be billed to cover the cost of the repair. Parent/Guardian

agrees that any negligent, willful or intentional damage to camp property by their child, including any graffiti on any buildings or structure, will result in a charge to the credit card provided by Parent/Guardian on the Health, History and Examination Form, equal to the cost of materials and labor to repair the damages. Before the Parent/Guardian's credit card is charged, they will receive written notification of the damage and the cost of repairs.

10. Campers disrupting camp activities, not adhering to camp rules and policies (including but not limited to, these Rules of Good Conduct), and/or not participating in mandatory camp activities, as determined in the sole discretion of Camp Tel Yehudah, may result in disciplinary action and/or dismissal.

At any time, Camp Tel Yehudah may find it necessary to alter and/or add rules and restrictions. Campers agree to fully comply with all rules or restrictions, including any alterations and/or additions made by Camp Tel Yehudah. All rules and restrictions apply throughout the entirety of Camp including during free time. Any failure to comply with Camp Tel Yehudah's rules and restrictions and any alterations and/or additions thereto may result in disciplinary measures, in the sole discretion of Camp Tel Yehudah, up to and including immediate dismissal and/or other removal from Camp. The following rules and restrictions are not exclusive and the failure to specify in each rule that violation may result in discipline, dismissal or other removal from Camp shall not preclude Camp Tel Yehudah from doing so in its sole discretion. Further, the failure of Camp Tel Yehudah at any time to enforce any rule or restriction or to exercise any right with respect to disciplinary action, will not be construed as a waiver of any such right, will not affect any subsequent violation, and will not prejudice Camp Tel Yehudah in connection with any subsequent enforcement or disciplinary action.

In all cases of discipline, dismissal and/or other removal, the determination of Camp Tel Yehudah regarding the rules, restrictions and policies and their application shall be final and binding, and will not be subject to challenge or review in any forum. In addition, Camp Tel Yehudah reserves the right to contact the local authorities. Any violation of law by or involving a camper will be subject to the penalty, laws and rules imposed by the local jurisdiction, and Camp Tel Yehudah will not undertake to provide Camper with legal assistance.

Any camper who is dismissed or otherwise removed from the program will be sent home at his/her parent(s)/guardian(s) expense and is not eligible for any tuition, fee, Travel subsidy reimbursement or other refund. The camper and his/her parent(s)/guardian(s) are responsible for the cost of returning him/her home, including the return fare, shipping of baggage, any other associated expenses, and for any and all damages arising out of the involvement of the camper and/or the camper's actions. The above also applies to any camper who voluntarily removes him/herself from camp.

Any disciplinary actions taken during the summer at Camp Tel Yehudah might influence or limit a camper's ability to participate in future Young Judaea activities and programs during the rest of the year and may also affect membership in Young Judaea, admission to, or acceptance in, future Young Judaea summer programs and Young Judaea Israel programs. Campers and parent(s)/guardian(s) will receive written notification of such actions.

## ONLINE COMMUNICATIONS POLICY FOR TEL YEHUDAH CAMPERS

---

Camp Tel Yehudah respects the right of campers and their parents/guardians to participate in online communities, including social networking sites such as Facebook, Instagram, Twitter, or to create their own personal webpages or blogs. Campers or their parents/guardians who identify themselves as campers of Camp Tel Yehudah or parents/guardians of such campers in any such Internet venue may, however, be viewed by some, as representatives of the Camp. In light of this, Camp Tel Yehudah requires its campers and its Camper's parents/guardians, as a condition to participation at Camp Tel Yehudah, to adhere to the following policy when referencing Camp Tel Yehudah or any of its staff, programs, activities, or other campers in their or any other blog or personal website. These rules are not intended to be exclusive and, therefore, may be interpreted by Camp Tel Yehudah to include similar rules governing the use of such Internet sites.

1. Campers and Camper's parents/guardians must be thoughtful and respectful in all communications related to or referencing the camp, its staff or other campers.
2. Campers and Camper's parents/guardians must not use profanity, obscenities, or vulgar language.
3. Campers and Camper's parents/guardians must not post any comments or pictures about Camp Tel Yehudah, its staff, or other campers that could be considered threatening, disparaging, humiliating, demeaning, sexually suggestive, or defamatory in any way.
4. Campers and Camper's parents/guardians must not use blogs, personal websites, social networking sites or Instant Messaging to harass, intimidate, or bully other campers or staff.
5. Campers and Camper's parents/guardians must not use blogs, personal websites, social networking sites or Instant Messaging to discuss engaging in conduct that is prohibited by Camp Tel Yehudah policies, including but not limited to, the use of alcohol or illegal drugs, abuse, or inappropriate sexual behavior.
6. Neither Camp Tel Yehudah nor Young Judaea shall be responsible for the pictures posted on any Camper's or Camper's parents/guardians' personal website.
7. Campers and Camper's parents/guardians must not use the Camp Tel Yehudah's or Young Judaea's name, logo or any other identifying information of Camp Tel Yehudah or Young Judaea in connection with postings or pictures without obtaining written permission.

Camp Tel Yehudah reserves the right to monitor a camper's webpage or blog at any time without prior consent or approval. Any postings or pictures that are inappropriate or posted without permission must be removed immediately. Upon the determination, in the sole discretion of Camp Tel Yehudah, that there has been a violation of this policy, disciplinary action may be taken, up to and including, immediate dismissal from Camp Tel Yehudah, at parent's expense without refund.



# Tel Yehudah Glossary

River	<i>Nahar</i>	נהר
Rec Hall	<i>Bet Ha'am</i>	בית העם
Dining Room	<i>Chadar Ochel</i>	חדר אוכל
Beach	<i>Chof</i>	חוף
Movement	<i>T'nua</i>	תנועה
Camp	<i>Machaneh</i>	מחנה
Storage	<i>Machsas</i>	מחסן
Health Center	<i>Mirpa'ah</i>	מרפאה
Shower	<i>Miklachat</i>	מקלחת
Office	<i>Misrad</i>	משרד
Kitchen	<i>Mitbach</i>	מטבח
Pavilion	<i>Moadon</i>	מועדון
Tents	<i>Ohalim</i>	אוהלים
Bathroom	<i>Sherutim</i>	שירותים
Library	<i>Sifria</i>	ספריה
Cabin	<i>Tsrif</i>	צריף
Distinction	<i>Havdallah</i>	הבדלה
Welcome of Shabbat	<i>Kabbalat Shabbat</i>	קבלת שבת
Religious Services	<i>T'fillot</i>	תפילות
Please	<i>B'vakasha</i>	בבקשה
Hello/Goodbye/Peace	<i>Shalom</i>	שלום
Good Morning	<i>Boker Tov</i>	בוקר טוב
Good Evening	<i>Erev Tov</i>	ערב טוב
Good Night	<i>Laila Tov</i>	לילה טוב
Shabbat Shalom	<i>Shabbat Shalom</i>	שבת שלום
Thank you	<i>Todah</i>	תודה
Birthday	<i>Yom Huledet</i>	יום הולדת
Unit Head	<i>Merakez/et</i>	מרכז
Staff	<i>Tsevet</i>	צוות
Sports	<i>Sport</i>	ספורט
Director	<i>Menahel</i>	מנהל
Canteen	<i>Makolet</i>	מקולת
Smile	<i>Chiyuch</i>	חיוך

Wake up	<i>Hashkama</i>	השכמה
Breakfast	<i>Aruchat Boker</i>	ארוחת בוקר
Lunch	<i>Aruchat Tsoharayim</i>	ארוחת צהריים
Dinner	<i>Aruchat Erev</i>	ארוחת ערב
Snack	<i>Kibud</i>	כיבוד
Work	<i>Avodah</i>	עבודה
Unit	<i>Chug</i>	חוג
Arts-&Crafts	<i>Omanut</i>	אומנות
Hebrew	<i>Ivrit</i>	עברית
Play	<i>Hatzaga</i>	הצגה
Party	<i>Mesiba</i>	מסיבה
Rest	<i>Menucha</i>	מנוחה
Free time	<i>Chofesh</i>	חופש
Clean up	<i>Nikayon</i>	ניקיון
Activity	<i>Peulah</i>	פעולה
Education	<i>Chinuch</i>	חינוך
Meeting	<i>P'gishah</i>	פגישה
Dance	<i>Rikud</i>	ריקוד
Swimming	<i>S'chiya</i>	שחיה
Movie	<i>Seret</i>	סרט
Ropes Course	<i>Maslul Chavalim</i>	מסלול חבלים
Watch duty	<i>Shmira</i>	שמירה
Trip/Hike	<i>Tiyul</i>	טיול
Kitchen duty	<i>Toranut</i>	תורנות
Scouting	<i>Tzofit</i>	צופיות
Singing	<i>Shira</i>	שירה
Camper	<i>Chanich</i>	ה/חניך
Counselor	<i>Madrich/a</i>	ה/מדריך
Specialist	<i>Moomcheh/Ah</i>	מומחה
Head Counselor	<i>Rosh Machaneh</i>	ראש מחנה
Good Appetite	<i>B'teavon</i>	בתיאבון
Child Care	<i>Gan</i>	גן
Fun	<i>Kef</i>	כיף

# Support Tel Yehudah

Join us as we ensure that the unique Tel Yehudah experience is available for all and help us build the future of our home in Barryville.

**GET INVOLVED:** Interested in the future of Tel Yehudah?? Find out about getting involved and helping secure the programmatic, financial, and physical future of TY. With the recent independence of Young Judaea and Tel Yehudah we need the support and help of the entire TY community. Complete the form at: <http://www.telyehudah.org/give> and we will contact you with opportunities to get involved.

**LEARN:** As we envision Tel Yehudah's future, we are considering the diverse needs of our campers and our evolving program – physical, social, intellectual, and spiritual. Our goal is to enhance and modernize our existing facilities while still maintaining the traditional feel of camp. Learn more about our vision for the future of our home in Barryville: <http://www.telyehudah.org/give/capital-campaign/>

**DONATE:** Help support TY as we continue to offer a premiere Jewish experience to teens from around the country and the world to every Jewish teen who wants to attend! Make your easy and secure donation to Tel Yehudah at: <http://www.telyehudah.org/give>

**SEED A LEGACY (KEREN ATID):** Include Tel Yehudah in your planned giving to ensure Tel Yehudah's long-term future. Your gift becomes a lasting legacy and enables you to make a significant contribution to camp that you may not be able to provide during your lifetime. Learn more and become a member of Keren Atid: The Tel Yehudah Future Fund at: <http://www.telyehudah.org/give/karen-atid-tel-yehudah-future-fund>



## REFER NEW TEENS:

REFER-A-CAMPER PROGRAM



**\$250**

per new camper

800-970-CAMP (2267)

[www.campjty.com](http://www.campjty.com)

## How to earn \$\$ with REFER-A-CAMPER?

- STEP 1:** Find your Jewish friends that have not previously attended a Young Judaea camp.
- STEP 2:** Tell these friends how AMAZING it would be if they joined you at Tel Yehudah this summer!
- STEP 3:** Give them more info about TY by sharing your own stories and helping them learn more by visiting our website ([www.campjty.com](http://www.campjty.com)) or calling us at 800-970-CAMP(2267).
- STEP 4:** When your friends register for camp online, you automatically earn \$250 for each new camper!

*IT'S THAT EASY!!!*

*Tel Yehudah is thankful for the generous support of:*

